



**MS9520 Voyager** is an advanced auto-trigger, single line laser bar code scanner that is equally effective hand held or in the stand for presentation scanning.



# MS9520 Voyager®

## Features

- **Automatic trigger**
- **Decodes RSS-14 bar codes**
- **PowerLink, user-replaceable cables**
- **Adjustable stand**
- **Firmware updates via Flash ROM**
- **Custom edit the bar code data**
- **Short-range and long-range activation**
- **Easy programming using Windows® software or bar codes**
- **Supports commonly used interfaces, including USB**
- **OPOS system compatible**

## Metrologic's MS9520 Voyager®

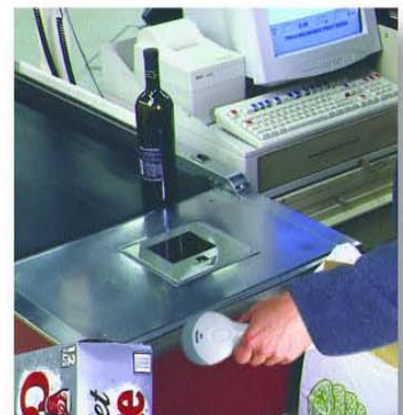
with a futuristic design and high-performance scanning system represents the best auto-triggered scanner value on the market.

Metrologic's engineering department was tasked with designing a replacement for our most successful product offering ever, namely the MS951. And the team delivered. Not only does the Voyager replace the MS951, it adds many new and innovative standard features such as Flash ROM, data editing, and PowerLink user-replaceable cables.

Flash ROM allows the firmware to be upgraded easily, and as software updates become avail-

able, each Voyager can be updated with all of the latest features utilizing an easy-to-use Windows®-based program. Using Bits 'n' Pieces® data editing utility, users can custom-edit the bar code data to meet the requirements of the host system.

Voyager now includes the ability to decode the emerging Reduced Space Symbology (RSS). Industries including supermarkets, pharmaceutical, and healthcare are beginning to utilize this new symbology. For those Voyager's already deployed, an online Flash ROM upgrade is available at [www.metrologic.com](http://www.metrologic.com).



# MS9520 Voyager®

## OPERATIONAL

Light Source	Visible Laser Diode 650 nm ± 10 nm
Laser Power	0.96 mW (peak)
Depth of Scan Field (programmable)	0 mm - 203 mm (0" - 8") for 0.33 mm (13 mil) bar codes
Width of Scan Field	64 mm (2.5") @ face; 249 mm (9.8") @ 203 mm (8.0")
Scan Speed	72 ± 2 scan lines per second
Scan Pattern	Single scan line
Minimum Bar Width	0.127 mm (5.0 mil)
Decode Capability	Autodiscriminates all standard bar codes; for other symbologies call Metrologic
System Interfaces	PC Keyboard Wedge, RS232, OCIA, Light Pen Emulation, IBM 468X/469X, Stand Alone Keyboard, USB
Print Contrast	35% minimum reflectance difference
Number Characters Read	Up to 80 data characters
Roll, Pitch, Yaw	42°, 68°, 52°
Beeper Operation	7 tones or no beep
Indicators (LED)	Green = laser on, ready to scan Red = good read

## MECHANICAL

Height	198 mm (7.8")
Depth	40 mm (1.6")
Width - Handle	80 mm (3.1")
Width - Head	102 mm (4.0")
Weight	149 g (5.25 oz)
Termination	10 pin modular RJ45
Cable	Standard 2.7 m (9') coiled; optional 2.1 m (7') straight;

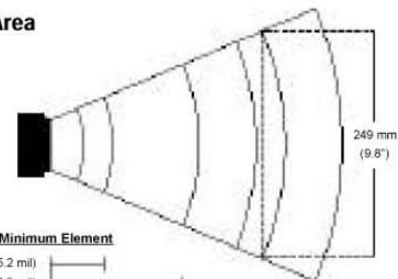
## ELECTRICAL

Input Voltage	5 VDC ± 0.25 V
Power - Operating	575 mW
Power - Standby	225 mW
Current - Operating	115 mA typical @ 5 VDC
Current - Standby	45 mA typical @ 5 VDC
DC Transformers	Class 2; 5.2 VDC @ 650 mA
Laser Class	CDRH: Class II; EN60825-1:1994/A11:1996 Class 1
EMC	FCC, ICES-003 & EN55022 Class B

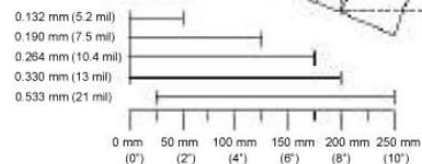
## ENVIRONMENTAL

Operating Temperature	0°C to 40°C (32°F to 104°F)
Storage Temperature	-40°C to 60°C (-40°F to 140°F)
Humidity	5% to 95% relative humidity, non-condensing
Light Levels	Up to 4842 Lux (450 footcandles)
Shock	Designed to withstand 1.5 m (5') drops
Contaminants	Sealed to resist airborne particulate contaminants
Ventilation	None required

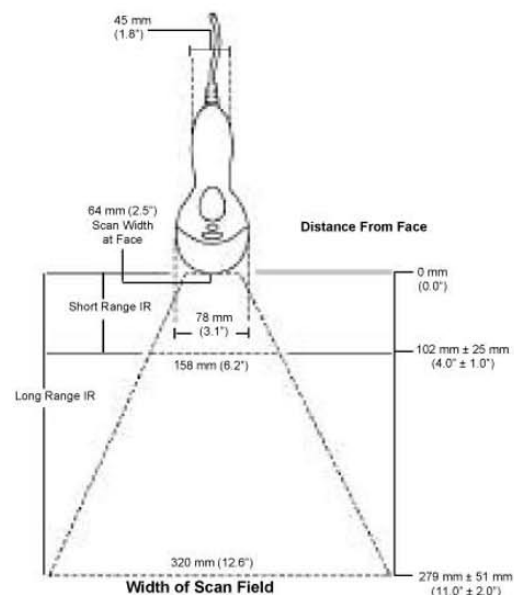
## Scan Area



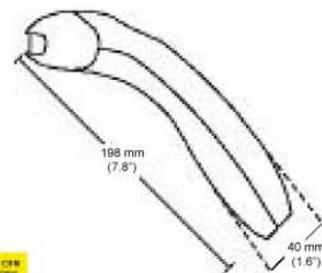
### Bar Code Minimum Element



## IR Activation and Scan Width



## Dimensions



www.metrologic.com

**USA**  
Tel. 1.800.ID.METRO  
info@metrologic.com

**Asia**  
Tel. 65.842.7155  
info@sg.metrologic.com

**AOA (only)**  
Tel. 1.617.806.1400  
info@aoa.metrologic.com

**China (only)**  
Tel. 86.512.2572511  
info@cn.metrologic.com

**South America**  
Tel. 5511.5182.7273  
info@sa.metrologic.com

**Japan (only)**  
Tel. 81.03.3839.8511  
info@jp.metrologic.com

**Brazil (only)**  
Tel. 5511.5182.8226  
info@br.metrologic.com

**Europe**  
Tel. 49.89.89019.0  
info@europe.metrologic.com

Specifications subject to change without notice.  
Printed U.S.A., Copyright November 2001  
Metrologic, All rights reserved.



DS9520